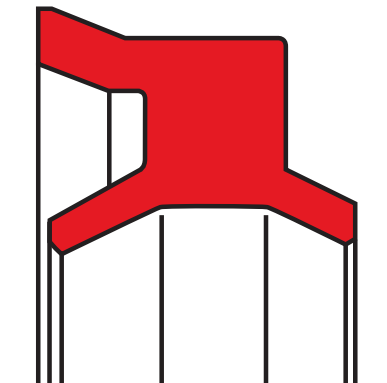


wiper A11-SK

seal spec



description

the profile design of the profile A11-SK rod seal/wiper combines the profile geometry of our tried and proven profile A11-SC with the requirements of mini-pneumatics, i.e. the dimensions of profile A11-SK are considerably smaller and friction values are even lower.

application



not bolded symbols; please consult our technical for application limitations

category of profile

machined or molded/standard/trade product.

double acting

area of application: pneumatic

small cylinders, compact cylinders.

medium:

lubricated air as well as dry air and oil-free air (after initial lubrication on assembly).

advantages

- both functions – sealing and wiping – are combined in one component.
- minimum space requirement with full serviceability and ideal end finish with the housing contour.
- simple housing, cost efficient in manufacturing.
- no additional requirements for axial securing.
- due to the special geometry of the sealing and wiping lip in combination with our compounds specially designed for this purpose, the profile A11-SK rod seal/wiper, after initial lubrication, may also be used in dry and/or oil-free air.
- smooth running due to optimum adjustment of the functional lips.
- zero danger of corrosion since part consists solely of polymeric material.

operating parameters & material

material	temperature	max. surface speed	max. pressure ¹
s-mart PU (90 shore A)	-35 °C ... +80 °C	1 m/s	16 bar (1,6 Mpa)

the stated operation conditions represent general indications. it is recommended not to use all maximum values simultaneously. surface speed limits apply only to the presence of adequate lubrication film.

¹ pressure ratings are dependent on the size of the extrusion gap.

surface quality

surface roughness	Rtmax (µm)	Ra (µm)
sliding surface	according to seal data	
bottom of groove	≤6,3	≤1,6
groove face	≤15	≤3

**tolerance recommendation**

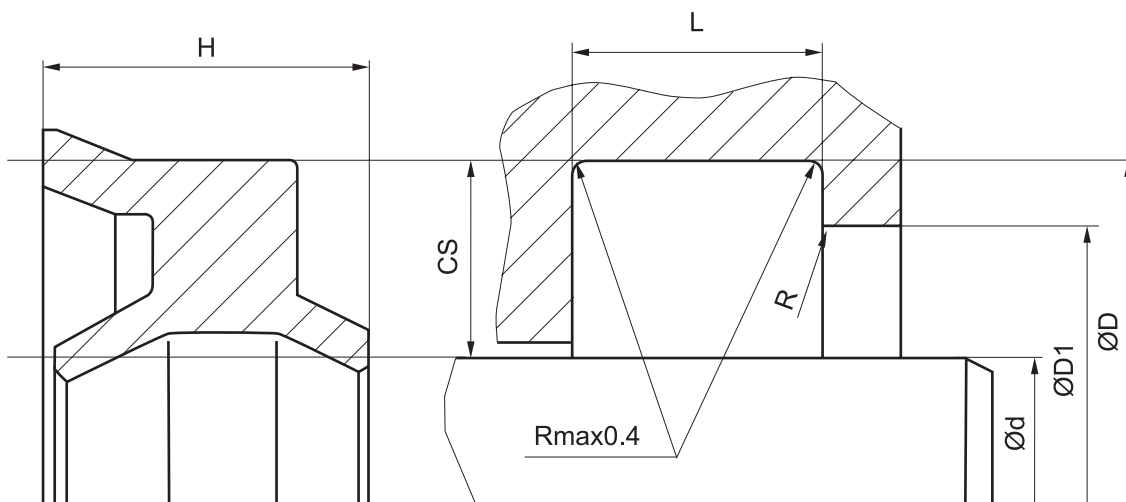
seal housing tolerances		cs	R [mm]
d	e9	≤ 5	max. 0,3
D	H10	$>5 \dots \dots \leq 7,5$	max. 0,4
		$>7,5 \dots \dots \leq 10$	max. 0,6
		> 10	max. 0,8

fitting & installation

the self-retaining rod seal/wiper profile A11-SK is manually or automatically snapped into the installation housing while the piston rod is disassembled. care is to be taken to prevent sharp edges from damaging the wiping and sealing lips during assembly. initial lubrication is the prerequisite for very long operational life.

seal & housing recommendations

please note that we are able to produce those profiles to your specific need or any non standard housing. for detail measurements, please see seal-mart catalog...



don't hesitate to contact our technical department for further information or for special requirements (temperature, speed etc.), so that suitable materials and/or designs can be recommended.